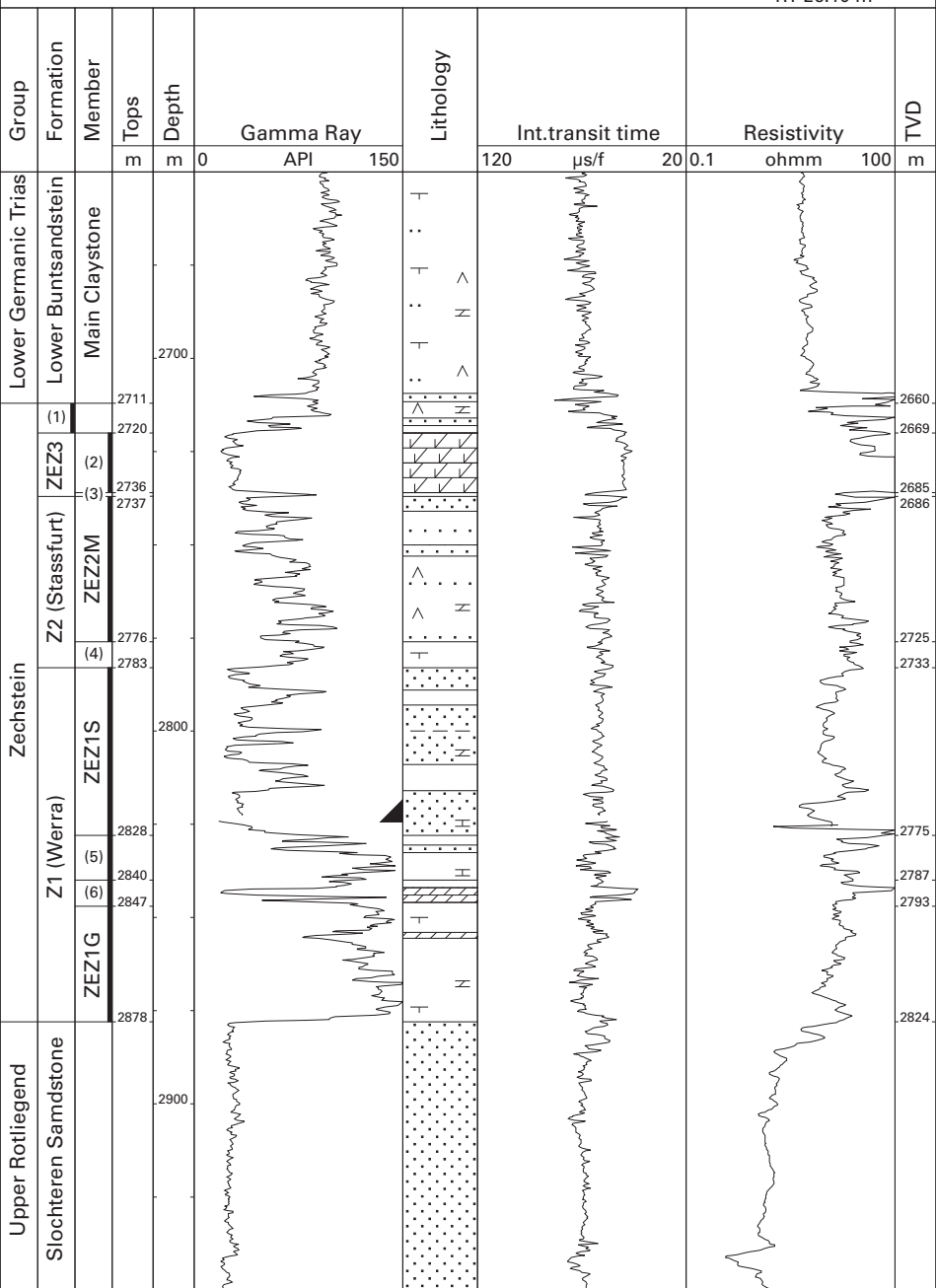


# Q11-01 (3rd hole) (NAM-Bow Valley)



- (1) Zechstein Upper Claystone Fm.
- ZEZ3 Z3 (Leine) Fm.
- (2) Z3 Carbonate Mb.
- (3) Grey Salt Clay Mb.
- ZEZ2M Z2 Middle Claystone Mb.

- (4) Red-brown Salt Clay Mb.
- ZEZ1S Z1 Sandstone Mb.
- (5) Z1 Middle Claystone Mb.
- (6) Z1 Fringe Carbonate Mb.
- ZEZ1G Z1 Lower Claystone Mb.