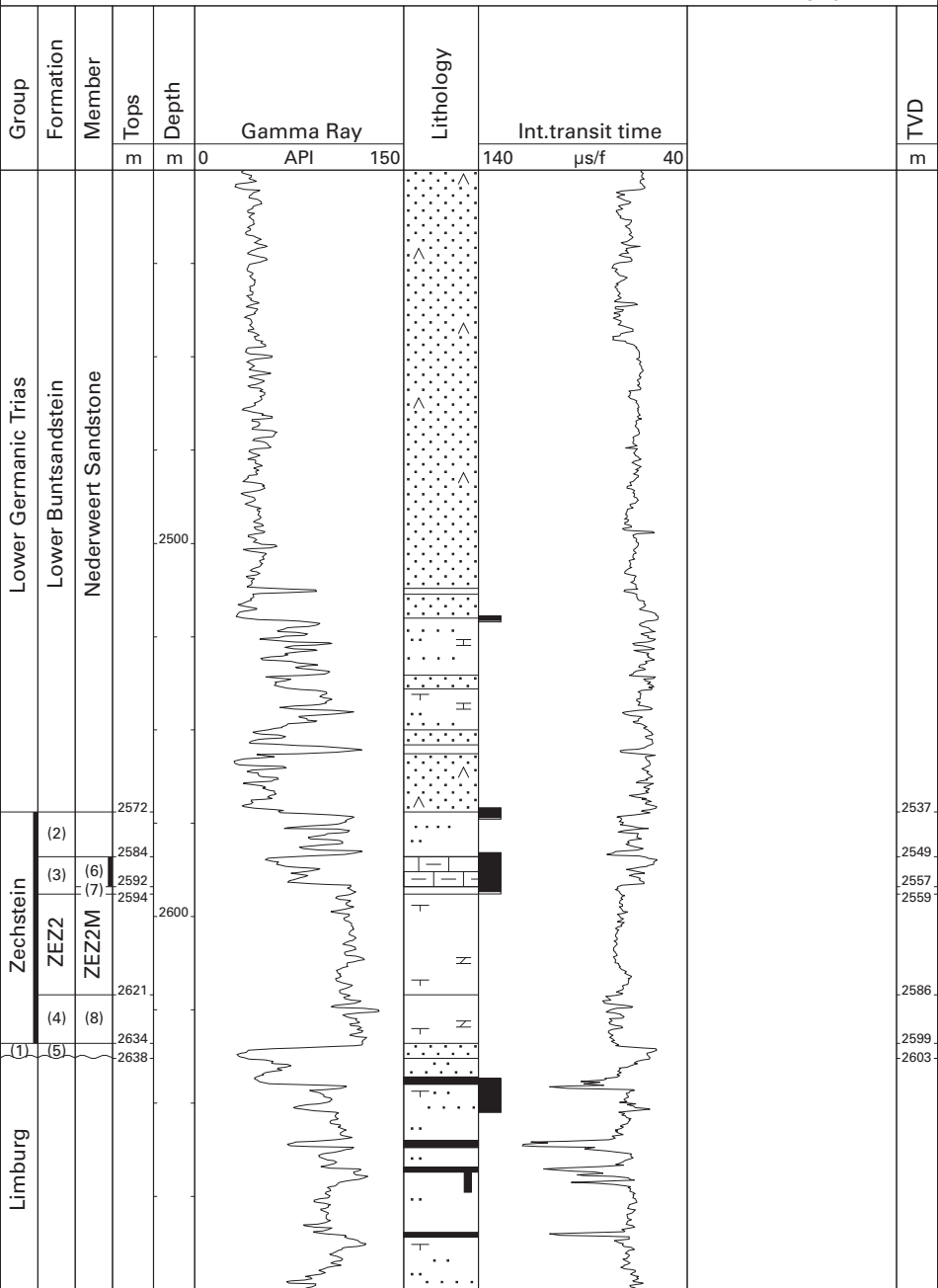


Nederweert-1 (FINA)



- | | | | |
|------|-------------------------------|-------|--------------------------|
| (1) | Upper Rotliegend Gr. | (5) | Slochteren Sandstone Fm. |
| (2) | Zechstein Upper Claystone Fm. | (6) | Z3 Carbonate Mb. |
| (3) | Z3 (Leine) Fm. | (7) | Grey Salt Clay Mb. |
| ZEZ2 | Z2 (Stassfurt) Fm. | ZEZ2M | Z2 Middle Claystone Mb. |
| (4) | Z1 (Werra) Fm. | (8) | Z1 Middle Claystone Mb. |
- ZEZ2M and (8) could be lumped into the informal Zechstein Middle Claystone unit (ZEFRM)