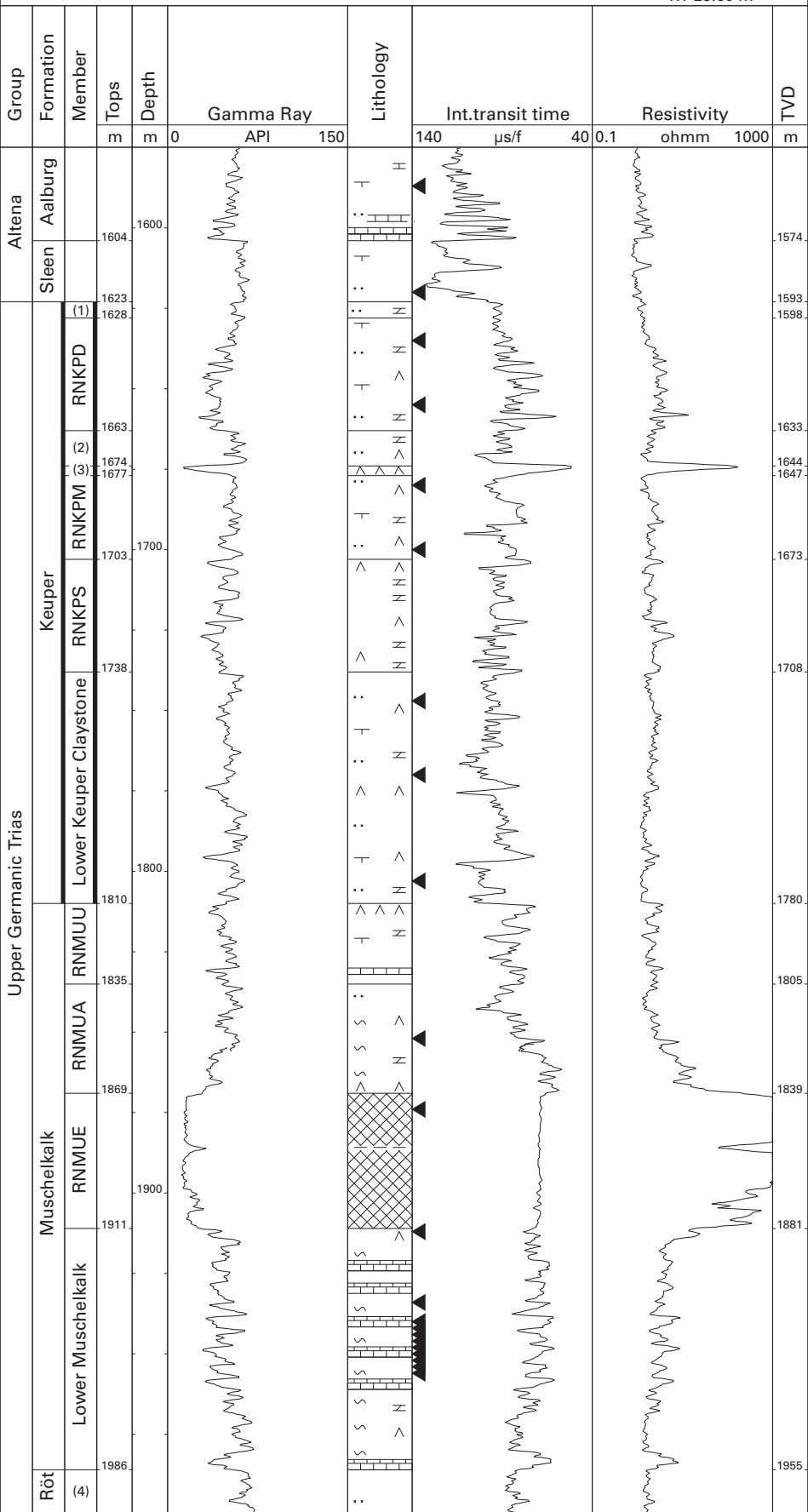


# K14-01 (NAM)

53°17'15.20" N  
03°37'07.30" E  
RT 29.60 m



(1) Upper Keuper Claystone Mb.

RNKPD Dolomitic Keuper Mb.

(2) Red Keuper Claystone Mb.

(3) Red Keuper Evaporite Mb.

RNKPM Middle Keuper Claystone Mb.

RNKPS Main Keuper Evaporite Mb.

RNMUU Upper Muschelkalk Mb.

RNMUA Middle Muschelkalk Marl Mb.

RNMUE Muschelkalk Evaporite Mb.

(4) Röt Claystone Mb.