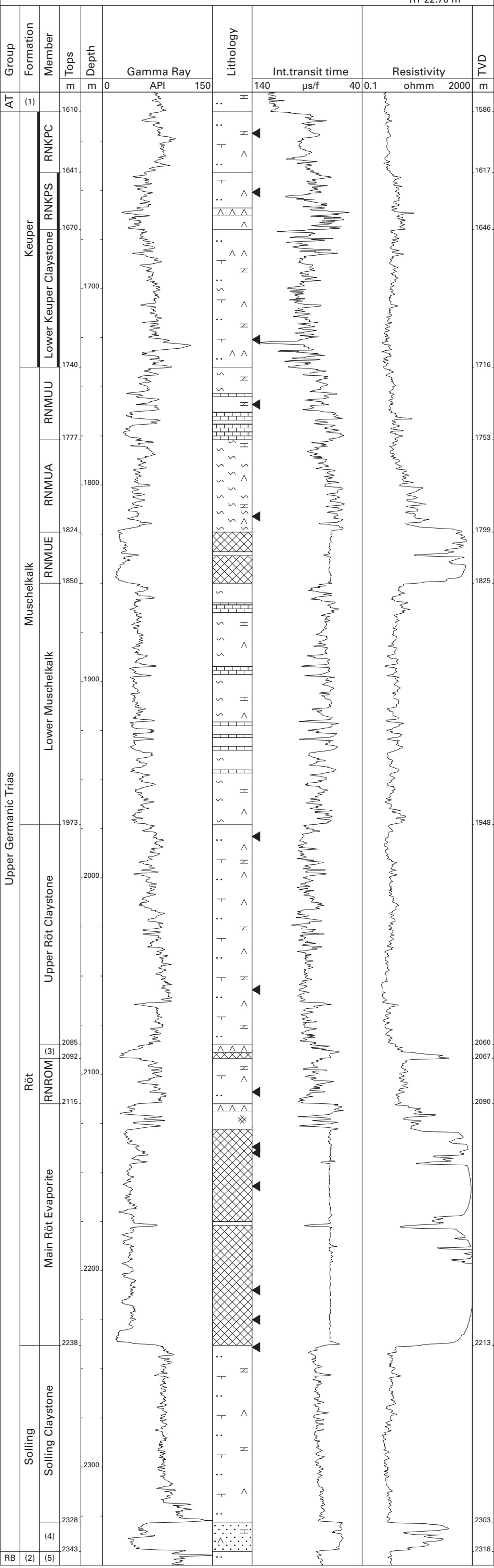


Emmen-7 (NAM)

52°46'56.60" N
06°50'37.44" E
RT 22.70 m



- | | | | |
|-------|-----------------------------------|-------|--------------------------------|
| AT | Altena Gr. | RNMUA | Middle Muschelkalk Marl Mb. |
| RB | Lower Germanic Trias Gr. | RNMUE | Muschelkalk Evaporite Mb. |
| (1) | Sleen Fm. | (3) | Upper Röt Evaporite Mb. |
| (2) | Detfurth Fm. | RNR0M | Intermediate Röt Claystone Mb. |
| RNKPC | Argillaceous Keuper Claystone mb. | (4) | Basal Solling Sandstone Mb. |
| RNKPS | Main Keuper Evaporite Mb. | (5) | Detfurth Claystone Mb. |
| RNMUU | Upper Muschelkalk Mb. | | |