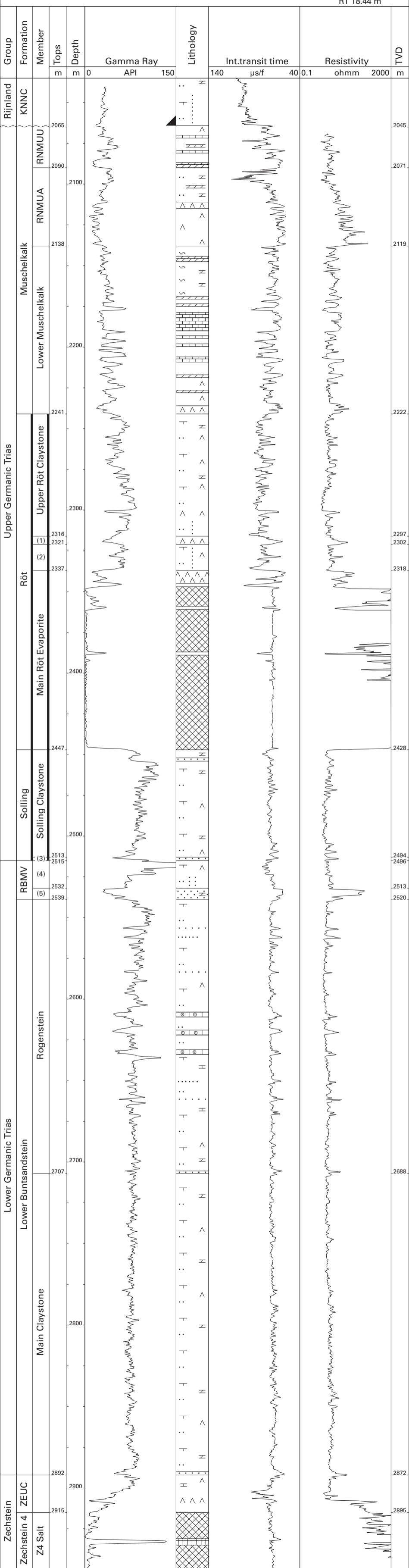


Eleveld-101 (NAM)

52°57'27.90" N
06°34'41.89" E
RT 18.44 m



KNNC	Vlieland Claystone Fm.	(1)	Upper Röt Evaporite Mb.
RBMV	Volpriehausen Fm.	(2)	Intermediate Röt Claystone Mb.
ZEUC	Zechstein Upper Claystone Fm.	(3)	Basal Solling Sandstone Mb.
RNMUU	Upper Muschelkalk Mb.	(4)	Volpriehausen Clay-Siltstone Mb.
RNMUA	Middle Muschelkalk Marl Mb.	(5)	Lower Volpriehausen Sandstone Mb.