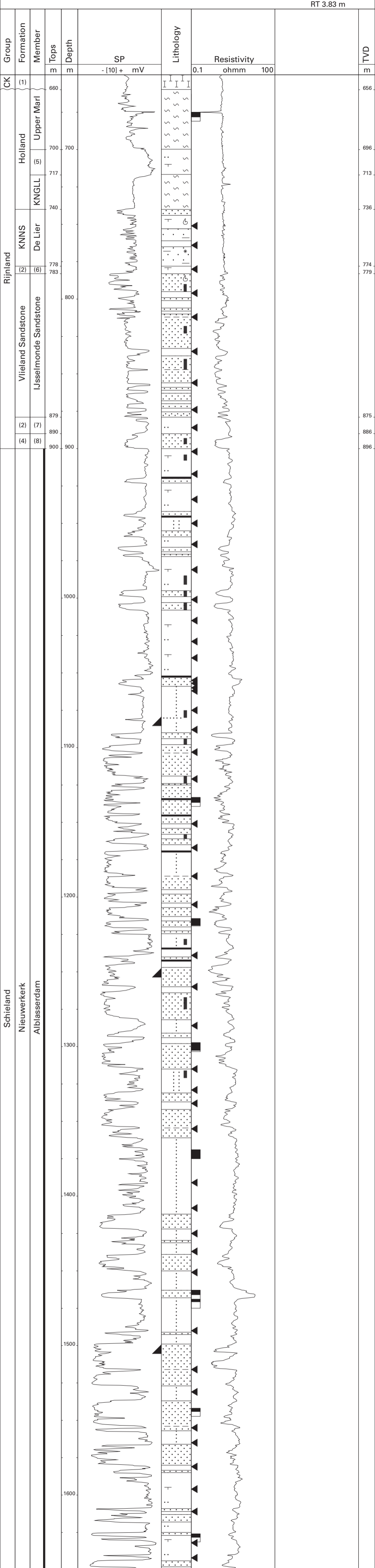


# Alblasserdam-1 (NAM)

51°52'18.90" N  
04°40'33.47" E  
RT 3.83 m



CK (1) Chalk Gr. (1) Texel Fm. (2) Vlieland Claystone Fm. (4) Vlieland Sandstone Fm. (6) KNGLL Lower Holland Marl Mb. (5) Eemhaven Mb. (7) Middle Holland Claystone Mb. (8) IJsselmonde Claystone Mb. Berkel Mb. TD=1650