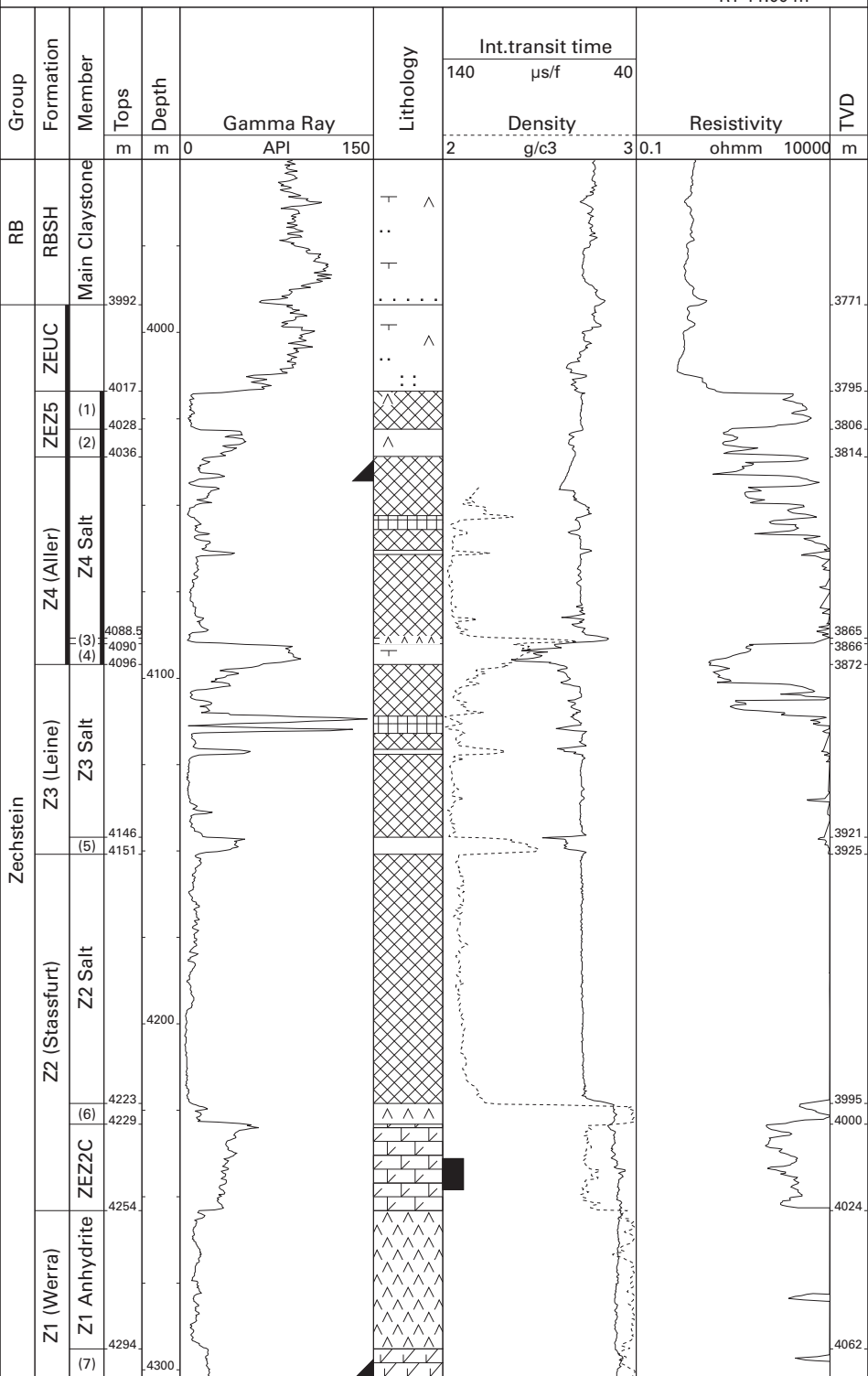


# Drouwenerveen-Zuideind-1 (NAM)

52°57'41.70" N  
06°52'16.94" E  
RT 11.00 m



TD=4303m

RB Lower Germanic Trias Gr.  
RBSH Lower Buntsandstein Fm.  
ZEUC Zechstein Upper Claystone Fm.  
ZEZ5 Z5 (Ohre) Fm.  
(1) Z5 Salt Mb.  
(2) Z5 Salt Clay Mb.

(3) Z4 Pegmatite Anhydrite Mb.  
(4) Red Salt Clay Mb.  
(5) Grey Salt Clay Mb.  
(6) Z2 Basal Anhydrite Mb.  
ZEZ2C Z2 Carbonate Mb.  
(7) Z1 Carbonate Mb.