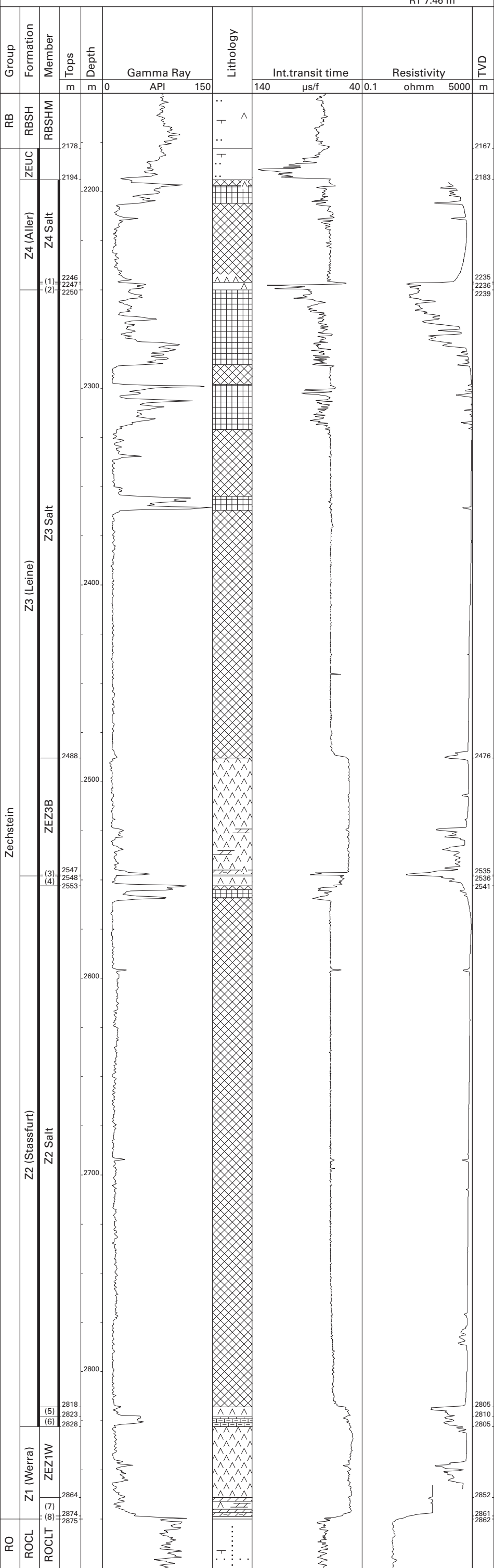


Uithuizermeeden-1 (NAM)

53°26'58.91" N
06°48'29.22" E
RT 7.46 m



RB	Lower Germanic Trias Gr.	(3)	Grey Salt Clay Mb.
RO	Upper Rotliegend Gr.	(4)	Z2 Roof Anhydrite Mb.
RBSH	Lower Buntsandstein Fm.	(5)	Z2 Basal Anhydrite Mb.
ZEUC	Zechstein Upper Claystone Fm.	(6)	Z2 Carbonate Mb.
ROCL	Silverpit Claystone Fm.	ZEZ1W	Z1 Anhydrite Mb.
RBSHM	Main Claystone Mb.	(7)	Z1 Carbonate Mb.
(1)	Z4 Pegmatite Anhydrite Mb.	(8)	Coppershale Mb.
(2)	Red Salt Clay Mb.	ROCLT	Ten Boer Claystone Mb.
ZEZ3B	Z3 Anhydr.-Carbonate Mb.		